

Engineering, Computing and Technology Pathway

Do you like to figure out a puzzle, tackle a new challenge, and come up with inventive solutions? Our Pathway in Engineering, Computing and Technology will develop the technical and mathematical skills needed to create new technologies and applications that could one day change the world.

The Foundation in Engineering, Computing and Technology is structured around projects that involve working with others from different degree programmes, enabling the development of important transferable skills such as communication and teamwork. You will also have opportunities for practical work and experimentation across a range of elements, including engineering design tasks centred on developing simple robots.

There'll be lectures and seminars combined with work-based learning and plenty of course options to personalise your studies.

Successful completion of this Pathway will guarantee progression to any of the following degrees at ARU:

Cambridge campus

- BSc (Hons) Artificial Intelligence
- BSc (Hons) Audio & Music Technology
- BSc (Hons) Computer Games Technology
- BEng (Hons) Computer Science
- BSc (Hons) Computer Networks
- BSc (Hons) Construction Management
- BSc (Hons) Cyber Security

Chelmsford campus

- BSc (Hons) Building Surveying
- BEng (Hons) Civil Engineering
- BSc (Hons) Civil Engineering
- BEng (Hons) Electronics and Robotics
- BEng (Hons) Mechanical Engineering
- BSc (Hons) Quantity Surveying
- BSc (Hons) Software Engineering



**SCAN FOR MORE
INFORMATION**

Your Pathway



Key information

Entry points: Foundation, First Year

Duration: Four years (Foundation)

Three years (First Year)

Intakes: January, September (dependent on course)

Location: Cambridge, Chelmsford

English language requirements: IELTS score of 5.5 (at least 5.5 in each component)

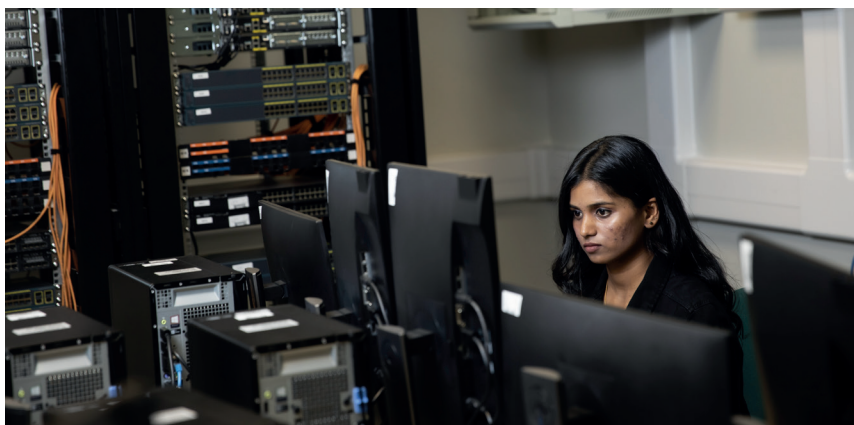
Academic requirements:



"By studying with ARU College, my learning skills were greatly improved. I especially developed my listening, writing, reading and speaking skills, which was a pleasant learning experience and are skills which are fundamental for effective learning."

"Upon fully completing my first year as an integrated student, ARU College made sure I had a smooth transition to my 2nd year at University."

Grace Oga, BSc (Hons) Civil Engineering, Nigeria



75% of ARU Mechanical Engineering students are in work or doing further study 15 months after graduating.*

*Data for courses in Mechanical Engineering at Anglia Ruskin University Higher Education Corporation


FIND OUT MORE

arucollege.com

+44 (0)1223 695700

info@arucollege.com

 facebook.com/arucollege

 [@arucollege](https://www.instagram.com/arucollege)

 [@arucollege](https://www.twitter.com/arucollege)